



Who are we?

We are the Clinical Research Network Yorkshire and Humber. We make sure health and social care research is done well, and that people can join in.

What is health and social care research research?



Research is how we find out how well things work. Research helps to make health and social care better.

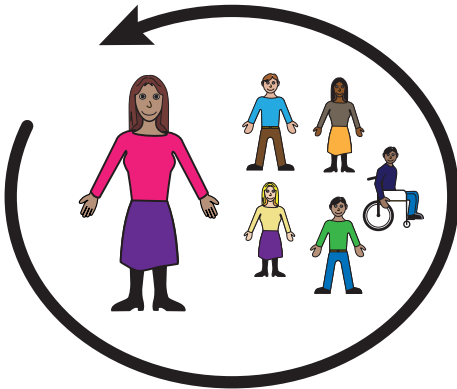
Who does research?



Usually people who do research have trained as doctors, nurses, pharmacist etc, although everyone can do research after training.

What is public involvement in research?

By “public” we mean:

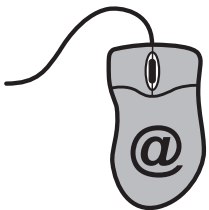


- Patients
- People who might be patients in future
- Carers
- People who use health and social care services
- People who speak up for people who use services.



Public Involvement in research is when people who are not professionals take part in research either as members of the research team or/and as people promoting research to everyone.

How can you join in research?



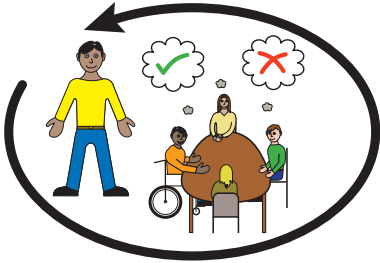
We can help you join in research.
Contact **evie.chandler@nihr.ac.uk**
if you want to find out more.



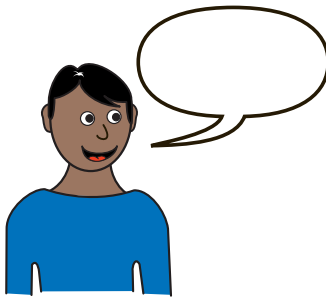
What is a Patient Research Ambassador?

A Patient Research Ambassador is someone who helps researchers.

He/she could be a:



- Patient
- Service user
- Carer
- Member of the public



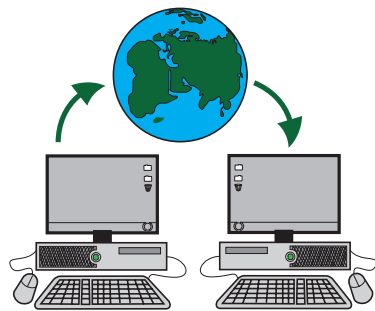
They need to be keen to join in research and happy to talk to other people about it.

If you would like to know more about being a Patient Research Ambassador in Yorkshire and Humber contact **evie.chandler@nihr.ac.uk**.

What is a clinical trial?

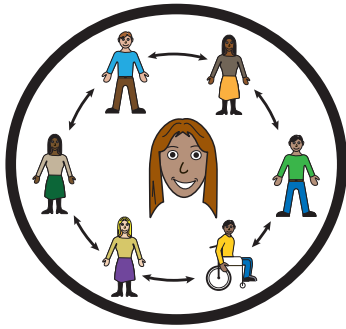


A clinical trial is a type of research involving patients. It looks at different kinds of medical treatment to see what works best. If you want to join a clinical trial ask your doctor, nurse or healthcare practitioner.

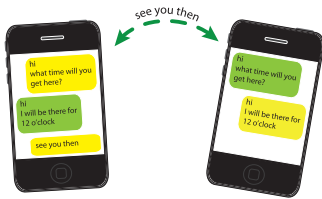


You could also visit the UK Clinical Trials Gateway at **www.ukctg.nihr.ac.uk**

How we can help you get involved?



We have a small team to help make sure people and researchers work well together to produce excellent research.



If you want to join in research or find out more please contact
Evie Chandler on 0113206046.



You can email Evie at
evie.chandler@nihr.ac.uk.



You can also tweet Evie on
@EviePPICRNyh